

Chapter – 2

**PARTICULARS OF ORGANIZATION, FUNCTIONS AND
DUTIES**

RTI CHAPTER 2
INFORMATION PUBLISHED BY THE DEPARTMENT
SUB-CLAUSE (i) OF SECTION 4(1)(B) OF THE RTI ACT, 2005
PARTICULARS OF ORGANISATION, FUNCTIONS AND DUTIES

Good physical connectivity in both urban and rural areas boosts economic growth. The Highways and Minor Ports Department of the Government of Tamil Nadu has been given the mandate of creating, augmenting and maintaining the Road and Port infrastructure of the State.

Better connectivity, broader roads, Ring roads, bridges, ROBs / RUBs and development of minor ports are all aimed at achieving balanced socio- economic development of the State.

OBJECTIVE

The objectives of the department are to maintain and improve the roads under the control of the Government, and to provide all weather road connectivity to rural habitations.

HISTORY OF THE DEPARTMENT

Government of Tamil Nadu has the unique distinction of creating a separate Highways Department as early as in 1946 exclusively to attend the roads and bridges in the State. It was a part of Public Works Department earlier but is now a separate and distinct department. A new post of Secretary to Government, Highways Department came into being in 1996.

VISION OF THE DEPARTMENT

The vision of the Highways Department is to increase the **capacity, connectivity, efficiency and safety** of the Highways System so as to enable balanced socio-economic development of all sections of the people and all regions of the state.

ROAD NETWORK UNDER THE MAINTENANCE OF THIS DEPARTMENT

70,556 km of roads are being maintained by Centre and State Highways Department.

Categories of roads and their length are as follows:-

Classification of Road	Length (km)
National Highways (NH)	
Maintained by NH wing	1,472
Maintained by NHAI	5,134
NH- Total	6,606
State Highways (SH)	11,275
Major District Roads (MDR)	11,623
Other District Roads (ODR)	41,052
Total	70,556

In addition to this, roads are also maintained by local bodies and other departments.

TYPES OF BRIDGES AND THEIR NUMBERS

Types of Bridges	Nos.
Major Bridges and Minor Bridges*	9,179
Culverts	1,26,318
Road Over Bridges at Railway level crossing (ROB)	136
Road Under Bridges at Railway level crossing (RUB)	58
Pedestrian Sub Way	15
Total	1,35,778

* includes bridges with Linear Waterway 6m-60m and more than 60m

NATIONAL HIGHWAYS

The National Highways are roads connecting different State capitals, District headquarters, Major Ports, large industrial areas and tourist centres. These roads have heavy traffic intensity.

The total length of National Highways in Tamil Nadu is 6,606 km of which 1,472 km are maintained by National Highways wing of the State Government and 5,134 km are maintained by the National Highways Authority of India (NHAI).

STATE HIGHWAYS

The State Highways provide connectivity with National Highways of neighbouring states and District Headquarters. These stretches have heavy traffic intensity next only to National Highways. The total length of State Highways in Tamil Nadu is 11,275km.

MAJOR DISTRICT ROADS

The Major District Roads connect production areas, towns and municipal areas with District head quarters. Further connectivity is provided with National Highways and State Highways. In Tamil Nadu, the length of Major District Roads is 11,623 km.

OTHER DISTRICT ROADS

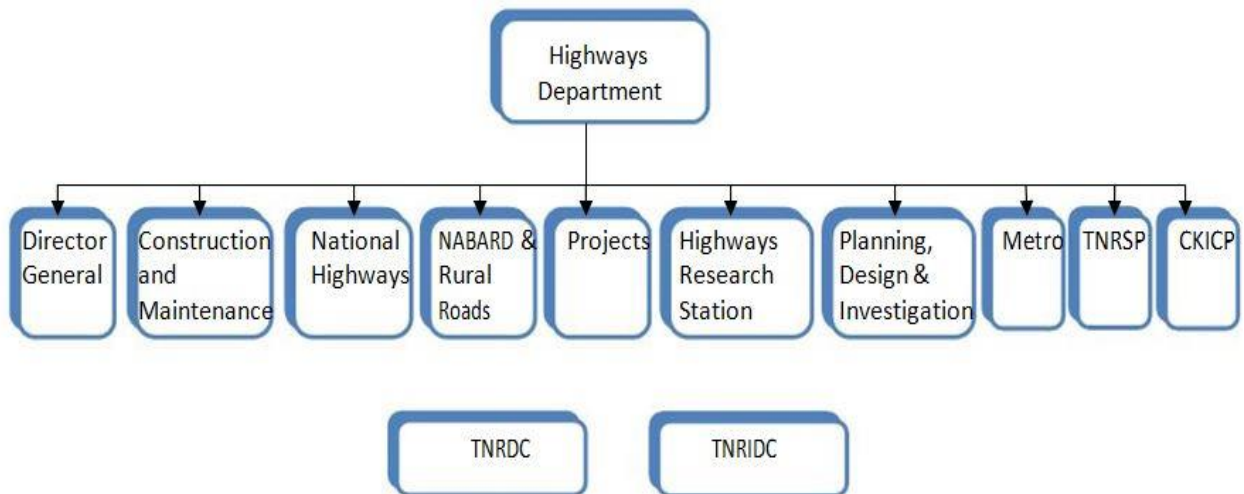
The Other District Roads provide connectivity with marketing, health care centers and taluk headquarters and other main roads. These roads are important as they provide mobility for transport of agricultural produce from villages to nearby marketing centers. These roads are the backbone of the rural economy. The Other District Roads are maintained as Single Lane or Intermediate Lane based on the traffic intensity of the roads.

Apart from this the Other District Roads connecting the sugarcane production centers with Sugar mills and in turn with nearby marketing centers are being improved and maintained under the category of ODR - Sugarcane roads. There are 41,052 km Other District Roads including Sugarcane roads.

LANE WISE DETAILS OF ROAD NETWORK

Sl. No.	Category of Road	Single Lane	Intermediate lane	Double Lane	Multi lane	Total
1	National Highways (NH)	-	-	236	1236	1472
	a) State NH Wing					
	b) NHAI	-	-	1656	3478	5134
	Sub-Total	-	-	1892	4714	6606
2	State Highways (SH)	33	207	8022	3013	11275
3	Major District Roads (MDR)	315	6241	4669	398	11623
4	Other District Roads (ODR)	33069	6567	1328	88	41052
	Total	33417	13015	15911	8213	70556

INSTITUTIONAL SETUP



Highways Department functions under the overall coordination of the Director General. There are 7 wings to execute the projects, a wing for Investigation and Design and one wing for monitoring the quality of various projects executed throughout the state by the department. The various wings are:

1. Construction & Maintenance wing – Works funded by State Government
2. National Highways wing - Works funded by Government of India
3. NABARD & Rural Roads wing – NABARD loan assistance works
4. Projects wing - Railways Works Programme (on funds sharing basis)
5. Metro wing - Chennai Metro Development Programme works
6. Tamil Nadu Road Sector Project – World Bank loan assistance works
7. Chennai Kanyakumari Industrial Corridor Project – Asian Development Bank loan assisted project
8. Planning, Design & Investigation – Preparation of detailed Project Report for major works.
9. Highways Research Station – Quality Monitoring System

In addition, two companies are executing Special Projects.

1. Tamil Nadu Road Development Company and ITEL subsidiary of the Tamil Nadu Road Development Company.

2. Tamil Nadu Road Infrastructure Development Corporation.

The functions of all the wings are detailed as follows:

OFFICE OF THE DIRECTOR GENERAL

- Establishment, Personnel and General Administration matters in Highways Department
- Overall Planning and Budgeting of Highways Department.
- Monitoring of Quality Control
- Managing the e-pathai related IT solutions by Information Technology Cell.
- Implementation and monitoring of Institutional Capacity Enhancement (ICE) and Road Safety (RS) components approved under TNRSP-II by Institutional Capacity Enhancement and Road Safety Cell (ICERS Cell).
- Training
- Expediting Land Acquisition
- Co-ordination of Court Cases
- Functioning with 3 Joint Directors and one Chief Officer (IT) in the Divisional Engineer cadre.
- Supported by ICERS cell with one Superintending Engineer and one Divisional Engineer.

CONSTRUCTION & MAINTENANCE WING

- Maintenance of State Highways, Major District Roads, Other District Roads, Sugarcane roads and bridges.
- Construction and Maintenance of Bypass
- Execution of spill-over works under Part-II scheme sanctioned earlier.
- Restoration of roads and bridges affected by natural calamities like monsoons, floods and Tsunami.
- Execution of road and bridge works under CRIDP including formation of bypasses.
- Forming Chennai Peripheral Ring Road from Ennore to Mamallapuram
- Implementation of road infrastructure schemes under Public Private Partnership.

- Implementation of Puduvayal Pulicat Road Phase II under TNIPP-II scheme.
- The wing functions under a Chief Engineer supported by 8 Circles and 41 Divisions.

NABARD & RURAL ROADS WING

- Execution of Bridges with loan assistance from NABARD and State Fund.
- Construction of Road Over Bridges / Road under Bridges under Railway Works Programme.
- Forming of Bypasses after completion of Land Acquisition.
- As a special scheme, the Panchayat Union Roads / Panchayat roads which were under the control of Rural Development & Panchayat Raj Department, have been upgraded to ODR standards from 2017-18 onwards under State Fund.
- This wing functions under a Chief Engineer supported by 4 Circles and 14 Divisions.

PROJECTS WING

- Construction of Road Over Bridges and Under Bridges in lieu of Railway level crossings on cost sharing basis under Railway Works Programme.
- Formation of Bypasses, Ring Roads and Radial Roads to decongest the traffic in major towns and Municipalities.
- Construction of High-Level River Bridges.
- Construction of Elevated Corridors, Grade Separators at major urban locations.
- The Chief Engineer, Projects wing heads the Unit with 4 Superintending Engineers at Circle level and 11 Divisional Engineers at Division level.

METRO WING

- Execution of Plan works in Chennai Metropolitan Area(CMA).
- Road works, major bridge works and flyovers works in road junctions underCMDP.
- Construction of ROBs / RUBs in Metroareas.
- The Chief Engineer, Metro wing heads the unit, with the support of a Circle and 5 Divisions.

NATIONAL HIGHWAYS WING

- National Highways development works are executed under Plan & Non- plan schemes with the funds provided by the Ministry of Road Transport and Highways, Government of India
- Developments of State roads are executed under Revamped Central Road Fund, Inter State Connectivity and Economic Importance schemes with the funds provided by the Government of India from Central Road Fund.
- State roads such as Other District Roads included in Core network are developed under Pradhan Mantri Gram Sadak Yojana programme with the funds provided by the Ministry of Rural Development, Government of India.
- Development of Western Ghats hill roads in Nilgiris District are executed under Hill Area Development Programme with the funds provided by the Government, Planning Development and Special Initiatives Department.
- National Highways wing functions under the Chief Engineer comprises of 4 circles and 13 Execution Divisions, 4 Quality Control Divisions & 1 Bus port Division.

TAMIL NADU ROAD SECTOR PROJECT WING (TNRSP)

- Upgradation of road works with the World Bank assistance.
- Undertaking feasibility studies for projects to be implemented through Public-Private Partnership (PPP) mode.
- Strengthening the organisational set-up of the Department.
- Road safety related works.
- This wing functions under the Project Director with a Chief Engineer, two Superintending Engineers and seven Divisional Engineers and also with an exclusive ICERS cell with one Superintending Engineer and one Divisional Engineer.

HIGHWAYS RESEARCH STATION

- Innovative Research studies on materials pertaining to Roads and Bridges.
- Suggestion for optimal traffic improvements with an emphasize on Road Safety.
- Collection of Road surface condition Data through Advanced Data Collection Equipments (ADCE).
- Imparting Training to Staff/Engineers of the department, other Government departments and students of technical institutions.
- Quality checking at all stages, of all works implemented by Highways Department, through the existing 3-tier Quality Assurance system.
- This wing functions under the Director with One Joint Director, 4 Deputy Directors, 8 Divisional Engineers (Quality Control) and 8 Regional Labs.

PLANNING, DESIGN AND INVESTIGATION WING

- Preparation of structural design, drawings and quantity estimates for River Bridges, Road Over Bridges, Road Under Bridges, Grade Separators and other Highway Structures.
- Proof Checking and according approval for Detailed Project reports prepared by the Consultants engaged by various wings of the Department.
- Revision of Structural components of the Bridges, if warranted in accordance with Subsoil conditions and Site constraints during execution.
- Scrutinizing and giving Recommendations to facilitate the issue of Permit for Non-standard heavy Motor vehicles to ply on Roads / Bridges.
- Scrutinizing and according approval for the Structural Design of Bridges that are being constructed by Other Departments.

CHENNAI – KANYAKUMARI INDUSTRIAL CORRIDOR PROJECT

- Implementing road improvement works in Chennai - Kanyakumari Industrial Corridor (CKIC) with ADB loan assistance.
- Special LA units expedite LA process for the Projects.
- Project headed by the Project Director with field implementation units to carry-out and monitor civil works.

TAMIL NADU ROAD DEVELOPMENT COMPANY (TNRDC)

- Management of Chennai Outer Ring Road (CORR) works.
- Concessionaire for Rajiv Gandhi IT Expressway construction and maintaining it as toll road.
- Concessionaire for East Coast Road (Chennai to Puduchery) construction and maintaining it as toll road.
- Supervision Consultancy for Ennore Manali Road Improvement Project (EMRIP).
- Managing Associate for construction of CPRR Section-I (Northern Port Access Road) project.
- Managing Associate for Rajiv Gandhi Salai Phase-II from Siruseri to Mamallapuram; stage-I for Kelambakkam – Tiruporur Bypasses.

TAMIL NADU ROAD INFRASTRUCTURE DEVELOPMENT CORPORATION (TNRIDC)

- Developing road and bridge infrastructure required in industrial areas.
- Madurai Ring Road improvement work.

Major activities of the Department

The works under various categories like widening, strengthening, formation of bypasses, construction of bridges etc., are selected for implementation considering the above parameters. The selection of works under each category is detailed below:

- ❖ Widening of roads
- ❖ Strengthening of roads
- ❖ Formation of bypasses/ ring roads/ new links
- ❖ Construction /Reconstruction of bridges and culverts
- ❖ Construction of Road Over Bridges / Under Bridges at the intersection of railway level crossings
- ❖ Urban Area Infrastructure Development Projects
- ❖ Development Projects in Chennai Metro Area
- ❖ Industrial / Port Connectivity Projects Special
- ❖ Projects with external funding

❖ Road Safety Works